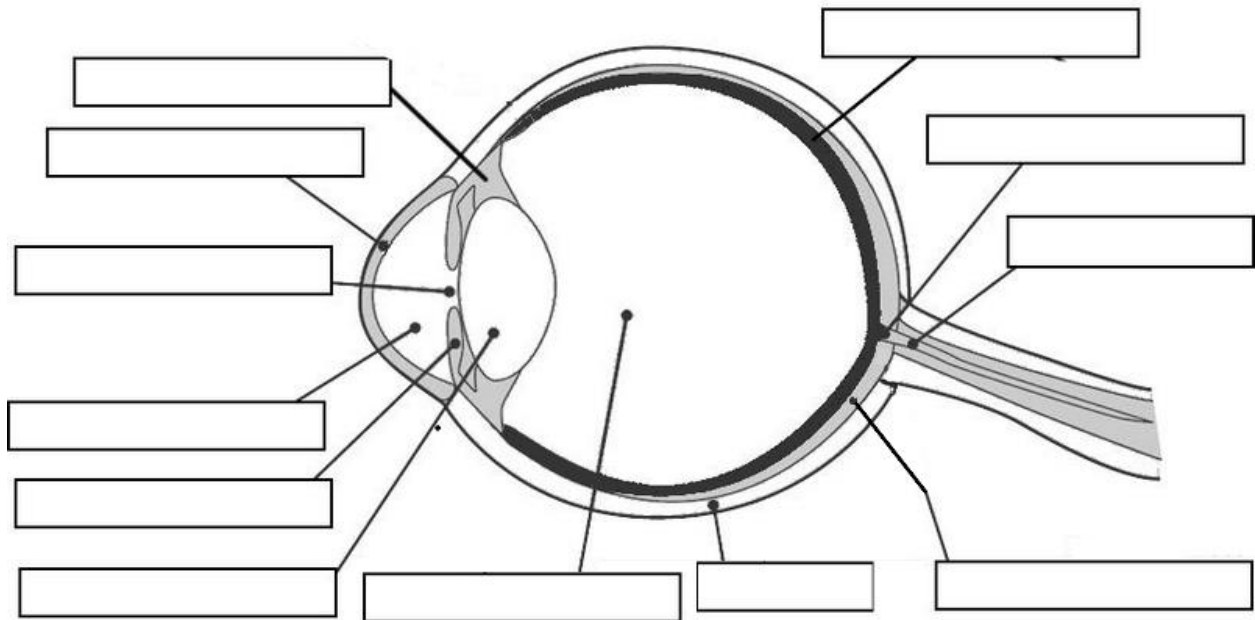


Cow Eye

Fill in the parts!



Parts:

Aqueous humor - A clear liquid that helps give the cornea its shape.

Choroid coat - Tissue below the retina that supplies nutrients.

Cornea - Clear, protective coating in front of the eye.

Ciliary body - Tissue surrounding the lens. Can change the shape of the lens for focusing.

Iris - Muscle in front of the lens. Can change how much light enters the eye.

Lens - A clear structure that can change shape, allowing us to focus on objects we see.

Optic disc - Where the optic nerve attaches to the eye. Also our blind spot.

Optic nerve - Nerve bundle which carries images from the eye to the brain.

Pupil - The hole at the center of the iris. This is why light passes through into our eye.

Retina - A thin layer at the back of the eye. This is where light images are received.

Sclera - Thick, outer covering of the eyeball.

Vitreous humor - Thick, clear jelly that gives the eyeball its shape.