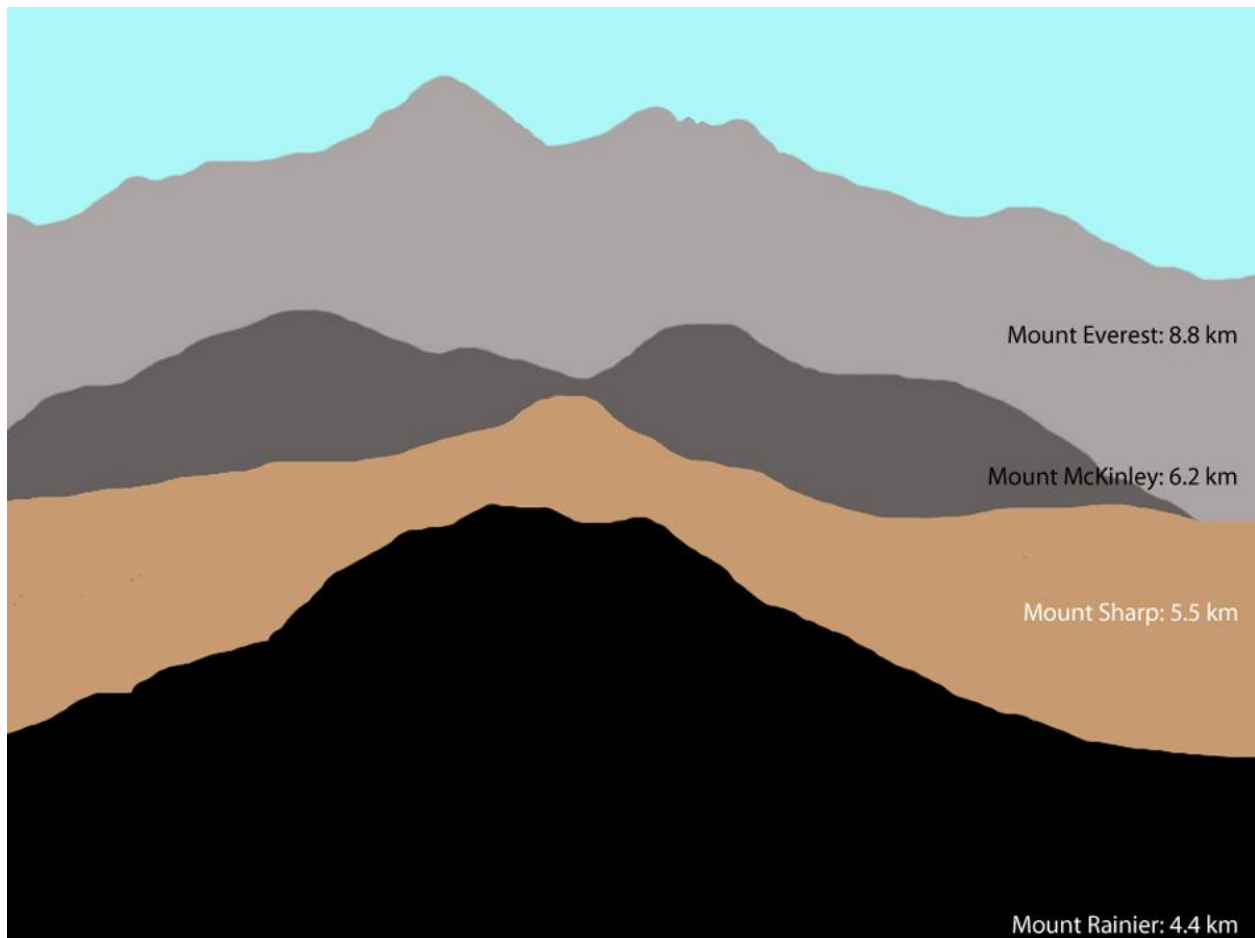
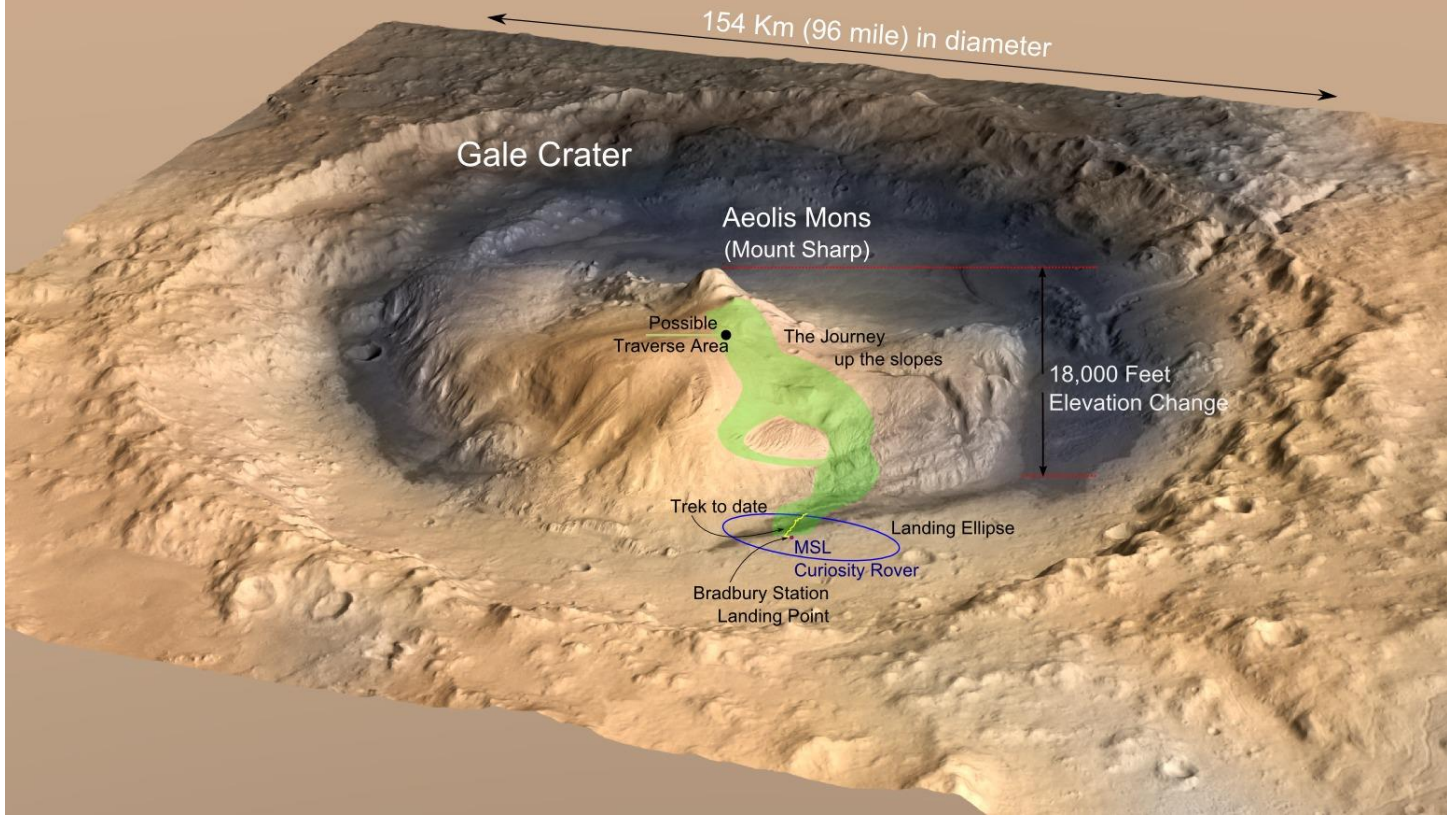


Spirit/Opportunity
Landed: January 2004
Sols in operation: 4724+

Sojourner
Landed: July 1997
Sols in operation: 85

Curiosity
Landed: August 2012
Sols in operation: 1686+

MSL Curiosity Rover inside Gale Crater, Mars



Roving time lapse:

<https://www.youtube.com/watch?v=8Alq08Pqtb0>

Watch: Mars Curiosity Rover's Wheels Getting Dings
https://www.youtube.com/watch?v=Tpl-2AVB2_E

Cool Facts about Curiosity's Wheels:

How do you make Curiosity's wheels last longer?

Scientists and engineers working with the Curiosity's Earth-based cousin "Scarecrow" discovered that the operating lifetime of Curiosity's damaged wheels can be reduced by driving backwards! When the terrain is easy to navigate, operators on Earth routinely drive Curiosity in reverse.

How do we know how far Curiosity has travelled?

Unlike on Earth, it isn't possible to measure distances travelled on Mars using GPS. To find out how far Curiosity has travelled, NASA scientists count the number of tread marks left behind by the wheels.

What is the Jet Propulsion Laboratory?

JPL is a research center run by NASA and The California Institute of Technology. They build and operate all of NASA's orbiters, landers and rovers that have visited planets and moons in the solar system. Curiosity's wheels were designed to leave prints in the sand that spell "JPL" in morse code.

