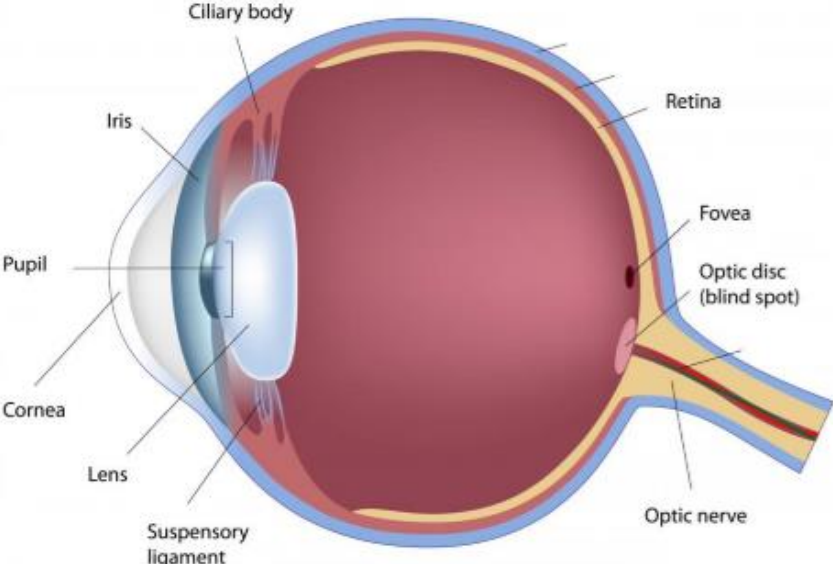


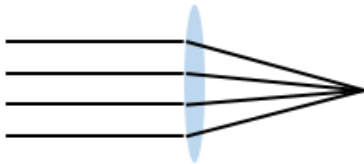
Anatomy of the Eye



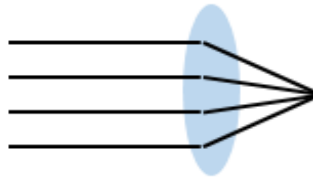
Lenses

Strong lenses focus light at a steeper angle than weak lenses.

WEAK LENS

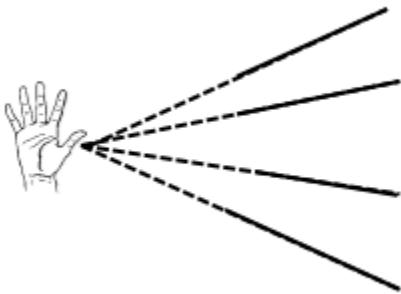


STRONG LENS



Light from close objects is very curved while light from far objects is almost straight.

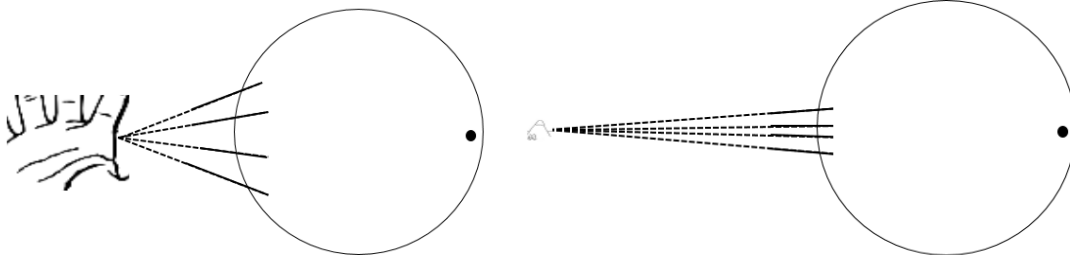
NEAR OBJECT



FAR OBJECT



All light needs to be focused onto our retina. Draw the bent light rays to focus them onto the fovea of the diagram below. Which lens - weak or strong - do you need for the near object? Which for the far?



Test Your Blindspot



Fill in Your Blindspot

